



**U.S. ARMY CORPS OF ENGINEERS
REGULATORY PROGRAM
APPROVED JURISDICTIONAL DETERMINATION FORM (INTERIM)
NAVIGABLE WATERS PROTECTION RULE**

I. ADMINISTRATIVE INFORMATION

Completion Date of Approved Jurisdictional Determination (AJD): 12/11/2020
 ORM Number: SWF-2020-00379
 Associated JDs: N/A
 Review Area Location¹: State/Territory: Texas City: Dallas County/Parish/Borough: Dallas
 Center Coordinates of Review Area: Latitude 32.694521 Longitude -96.947466

II. FINDINGS

A. Summary: Check all that apply. At least one box from the following list MUST be selected. Complete the corresponding sections/tables and summarize data sources.

- The review area is comprised entirely of dry land (i.e., there are no waters or water features, including wetlands, of any kind in the entire review area). Rationale: There are no water features in the evaluation area/parcel that meet the definition of waters of the US.
- There are “navigable waters of the United States” within Rivers and Harbors Act jurisdiction within the review area (complete table in Section II.B).
- There are “waters of the United States” within Clean Water Act jurisdiction within the review area (complete appropriate tables in Section II.C).
- There are waters or water features excluded from Clean Water Act jurisdiction within the review area (complete table in Section II.D).

B. Rivers and Harbors Act of 1899 Section 10 (§ 10)²

t§ 10 Name	§ 10 Size		§ 10 Criteria	Rationale for § 10 Determination
N/A.	N/A.	N/A	N/A.	N/A.

C. Clean Water Act Section 404

Territorial Seas and Traditional Navigable Waters ((a)(1) waters): ³				
(a)(1) Name	(a)(1) Size		(a)(1) Criteria	Rationale for (a)(1) Determination
N/A.	N/A.	N/A.	N/A.	N/A.

Tributaries ((a)(2) waters):				
(a)(2) Name	(a)(2) Size		(a)(2) Criteria	Rationale for (a)(2) Determination
Tributary 1-B	54	linear feet	(a)(2) Intermittent tributary contributes surface water flow directly or indirectly to an (a)(1) water in a typical year.	Self-evident that it is intermittent due to seasonal flow characteristics such as sediment sorting, a change in the channel’s geomorphology, and flowing & pooled water during evaluation.
Tributary 1-C	276	linear feet	(a)(2) Intermittent tributary contributes surface water flow directly or indirectly to an (a)(1) water in a typical year.	Self-evident that it is intermittent due to seasonal flow characteristics such as sediment sorting, a change in the channel’s geomorphology, and flowing & pooled water during evaluation.

¹ Map(s)/figure(s) are attached to the AJD provided to the requestor.

² If the navigable water is not subject to the ebb and flow of the tide or included on the District’s list of Rivers and Harbors Act Section 10 navigable waters list, do NOT use this document to make the determination. The District must continue to follow the procedure outlined in 33 CFR part 329.14 to make a Rivers and Harbors Act Section 10 navigability determination.

³ A stand-alone TNW determination is completed independently of a request for an AJD. A stand-alone TNW determination is conducted for a specific segment of river or stream or other type of waterbody, such as a lake, where upstream or downstream limits or lake borders are established. A stand-alone TNW determination should be completed following applicable guidance and should NOT be documented on the AJD Form.



**U.S. ARMY CORPS OF ENGINEERS
REGULATORY PROGRAM
APPROVED JURISDICTIONAL DETERMINATION FORM (INTERIM)
NAVIGABLE WATERS PROTECTION RULE**

Lakes and ponds, and impoundments of jurisdictional waters ((a)(3) waters):				
(a)(3) Name	(a)(3) Size		(a)(3) Criteria	Rationale for (a)(3) Determination
N/A.	N/A.	N/A.	N/A.	N/A.

Adjacent wetlands ((a)(4) waters):				
(a)(4) Name	(a)(4) Size		(a)(4) Criteria	Rationale for (a)(4) Determination
N/A.	N/A.	N/A.	N/A.	N/A.

D. Excluded Waters or Features

Excluded waters ((b)(1) – (b)(12)): ⁴				
Exclusion Name	Exclusion Size		Exclusion ⁵	Rationale for Exclusion Determination
Tributary 1-A	563	linear feet	(b)(3) Ephemeral feature, including an ephemeral stream, swale, gully, rill, or pool.	No indicators such as OBL/FACW vegetation, hydric soils, macro-invertebrates, algae accumulation in the channel observed. Also contrasted to intermittent stream onsite.
Tributary 1-D	1,410	linear feet	(b)(3) Ephemeral feature, including an ephemeral stream, swale, gully, rill, or pool.	No indicators such as OBL/FACW vegetation, hydric soils, macro-invertebrates, algae accumulation in the channel observed. Also contrasted to intermittent stream onsite.
Tributary 2	50	linear feet	(b)(3) Ephemeral feature, including an ephemeral stream, swale, gully, rill, or pool.	No indicators such as OBL/FACW vegetation, hydric soils, macro-invertebrates, algae accumulation in the channel observed. Also contrasted to intermittent stream onsite.
Tributary 3	313	linear feet	(b)(3) Ephemeral feature, including an ephemeral stream, swale, gully, rill, or pool.	No indicators such as OBL/FACW vegetation, hydric soils, macro-invertebrates, algae accumulation in the channel observed. Also contrasted to intermittent stream onsite.
Tributary 4	643	linear feet	(b)(3) Ephemeral feature, including an ephemeral stream, swale, gully, rill, or pool.	No indicators such as OBL/FACW vegetation, hydric soils, macro-invertebrates, algae accumulation in the channel observed. Also contrasted to intermittent stream onsite.

⁴ Some excluded waters, such as (b)(2) and (b)(4), may not be specifically identified on the AJD form unless a requestor specifically asks a Corps district to do so. Corps districts may, in case-by-case instances, choose to identify some or all of these waters within the review area.

⁵ Because of the broad nature of the (b)(1) exclusion and in an effort to collect data on specific types of waters that would be covered by the (b)(1) exclusion, four sub-categories of (b)(1) exclusions were administratively created for the purposes of the AJD Form. These four sub-categories are not new exclusions, but are simply administrative distinctions and remain (b)(1) exclusions as defined by the NWPR.



**U.S. ARMY CORPS OF ENGINEERS
REGULATORY PROGRAM
APPROVED JURISDICTIONAL DETERMINATION FORM (INTERIM)
NAVIGABLE WATERS PROTECTION RULE**

Excluded waters ((b)(1) – (b)(12)): ⁴				
Exclusion Name	Exclusion Size		Exclusion ⁵	Rationale for Exclusion Determination
Wetland 1	0.04	acre(s)	(b)(1) Non-adjacent wetland.	Wetland isolated in an upland area.
Pond 1	0.65	acre(s)	(b)(8) Artificial lake/pond constructed or excavated in upland or a non-jurisdictional water, so long as the artificial lake or pond is not an impoundment of a jurisdictional water that meets (c)(6).	Artificially created pond in an upland.
Erosion Feature 1	60	linear feet	(b)(3) Ephemeral feature, including an ephemeral stream, swale, gully, rill, or pool.	Inconsistent OHWM and no indicators such as OBL/FACW vegetation, hydric soils, macro-invertebrates, algae accumulation in the channel observed. Also contrasted to intermittent stream onsite.
Erosion Feature 2	54	linear feet	(b)(3) Ephemeral feature, including an ephemeral stream, swale, gully, rill, or pool.	Inconsistent OHWM and no indicators such as OBL/FACW vegetation, hydric soils, macro-invertebrates, algae accumulation in the channel observed. Also contrasted to intermittent stream onsite.
Erosion Feature 3	170	linear feet	(b)(3) Ephemeral feature, including an ephemeral stream, swale, gully, rill, or pool.	Inconsistent OHWM and no indicators such as OBL/FACW vegetation, hydric soils, macro-invertebrates, algae accumulation in the channel observed. Also contrasted to intermittent stream onsite.
Erosion Feature 4	343	linear feet	(b)(3) Ephemeral feature, including an ephemeral stream, swale, gully, rill, or pool.	Inconsistent OHWM and no indicators such as OBL/FACW vegetation, hydric soils, macro-invertebrates, algae accumulation in the channel observed. Also contrasted to intermittent stream onsite.
Erosion Feature 5	106	linear feet	(b)(3) Ephemeral feature, including an ephemeral stream, swale, gully, rill, or pool.	Inconsistent OHWM and no indicators such as OBL/FACW vegetation, hydric soils, macro-invertebrates, algae accumulation in the channel observed. Also contrasted to intermittent stream onsite.
Ditch 1	141	linear feet	(b)(5) Ditch that is not an (a)(1) or (a)(2) water, and those portions of a ditch constructed in	Self-evident artificial ditch such as no OBL/FACW vegetation, hydric soils, macro-invertebrates,



**U.S. ARMY CORPS OF ENGINEERS
REGULATORY PROGRAM
APPROVED JURISDICTIONAL DETERMINATION FORM (INTERIM)
NAVIGABLE WATERS PROTECTION RULE**

Excluded waters ((b)(1) – (b)(12)): ⁴				
Exclusion Name	Exclusion Size		Exclusion ⁵	Rationale for Exclusion Determination
			an (a)(4) water that do not satisfy the conditions of (c)(1).	algae accumulation in the channel observed. Also contrasted to intermittent stream onsite.
Ditch 2	198	linear feet	(b)(5) Ditch that is not an (a)(1) or (a)(2) water, and those portions of a ditch constructed in an (a)(4) water that do not satisfy the conditions of (c)(1).	Self-evident artificial ditch lacking indicators such as OHWM, OBL/FACW vegetation, hydric soils, macro-invertebrates, algae accumulation in the channel observed. Also contrasted to intermittent stream onsite.

III. SUPPORTING INFORMATION

A. Select/enter all resources that were used to aid in this determination and attach data/maps to this document and/or references/citations in the administrative record, as appropriate.

- Information submitted by, or on behalf of, the applicant/consultant: [See the file.](#)
This information **is** sufficient for purposes of this AJD.
Rationale: [N/A or describe rationale for insufficiency \(including partial insufficiency\).](#)
- Data sheets prepared by the Corps: [Title\(s\) and/or date\(s\).](#)
- Photographs: [Select. Title\(s\) and/or date\(s\).](#)
- Corps site visit(s) conducted on: [Date\(s\).](#)
- Previous Jurisdictional Determinations (AJDs or PJDs): [ORM Number\(s\) and date\(s\).](#)
- Antecedent Precipitation Tool: [provide detailed discussion in Section III.B.](#)
- USDA NRCS Soil Survey: [Title\(s\) and/or date\(s\).](#)
- USFWS NWI maps: [Title\(s\) and/or date\(s\).](#)
- USGS topographic maps: [Title\(s\) and/or date\(s\).](#)

Other data sources used to aid in this determination:

Data Source (select)	Name and/or date and other relevant information
USGS Sources	N/A.
USDA Sources	N/A.
NOAA Sources	N/A.
USACE Sources	N/A.
State/Local/Tribal Sources	N/A.
Other Sources	N/A.

B. Typical year assessment(s): [N/A or provide typical year assessment for each relevant data source used to support the conclusions in the AJD.](#)

C. Additional comments to support AJD: [N/A or provide additional discussion as appropriate.](#)

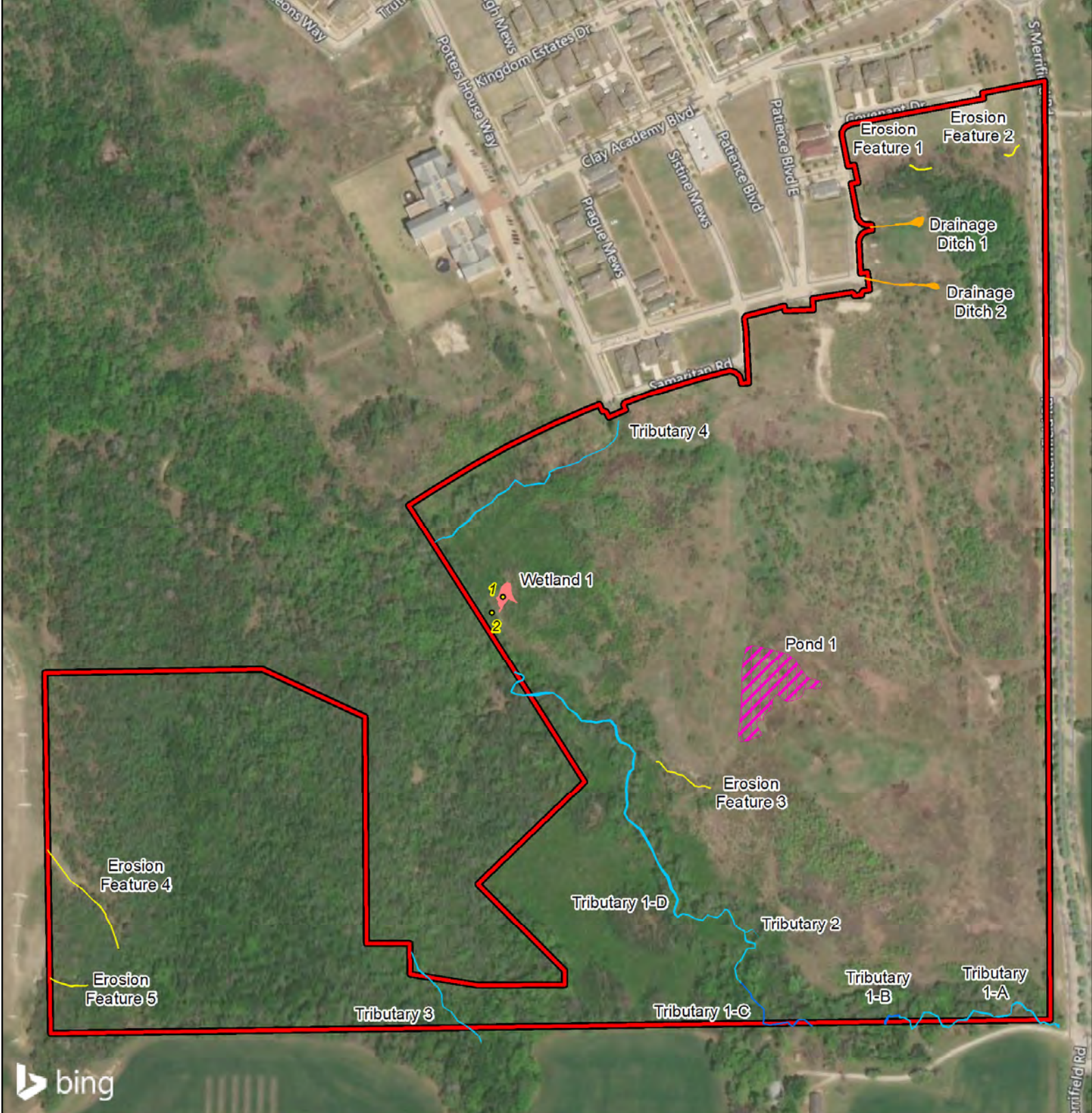
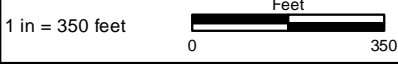


Figure 5.
Aquatic Resources Identified
within the Survey Area

Mountain Creek
 City of Dallas
 Dallas County, Texas



File Ref. 04.231.005
 Date: 9/11/2020

Legend

- Survey Area
- Wetland Determination Data Forms
- Aquatic Resources**
- Drainage Ditch - Ephemeral
- Erosion Feature - Ephemeral
- Pond - Seasonally Inundated
- Tributary - Ephemeral
- Tributary - Intermittent
- Emergent Wetland - Hillside Seep